

DRAWING NUMBER
57/49

DRAWING NUMBER

DRAWING NUMBER

DRAWING NUMBER

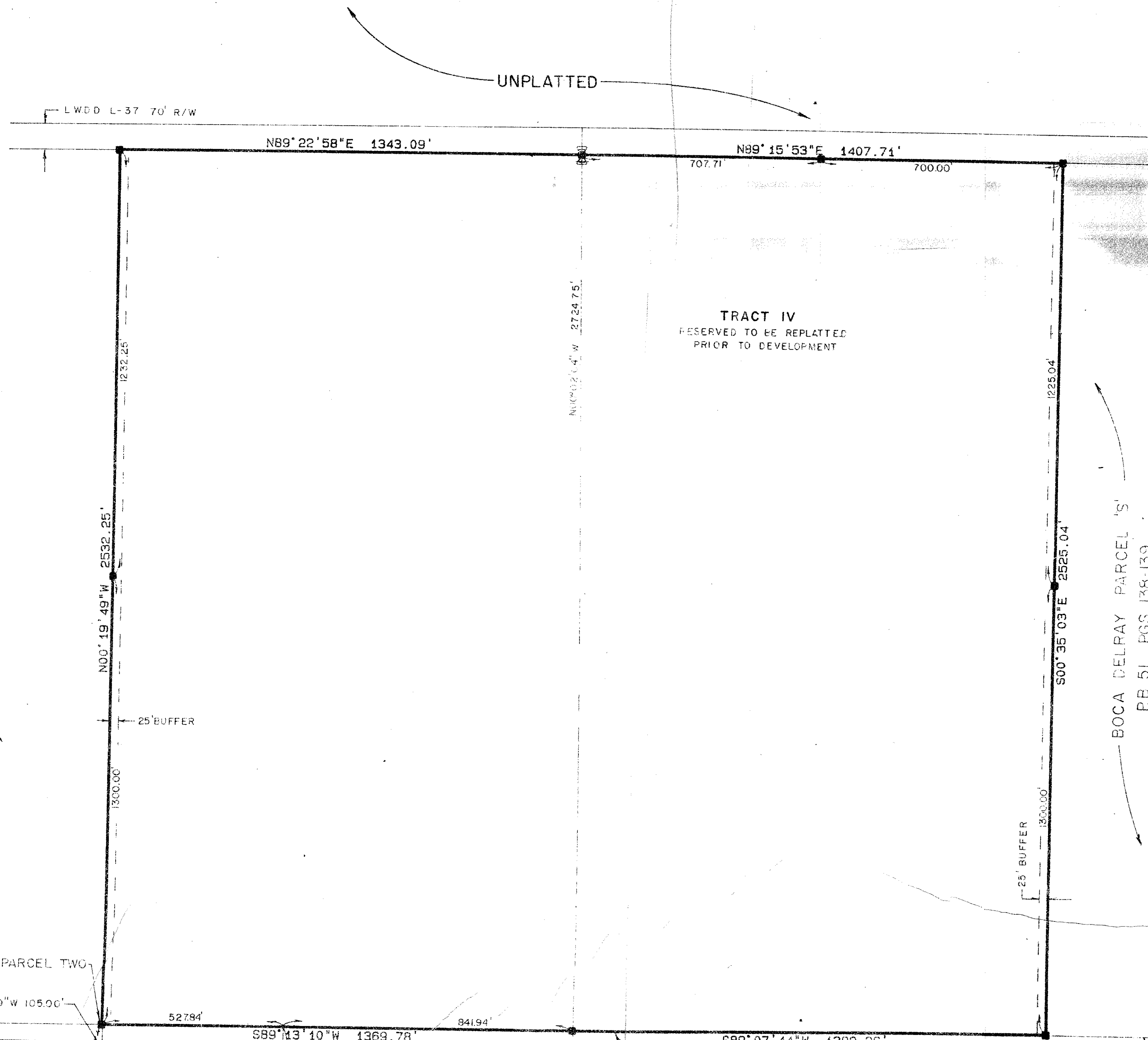
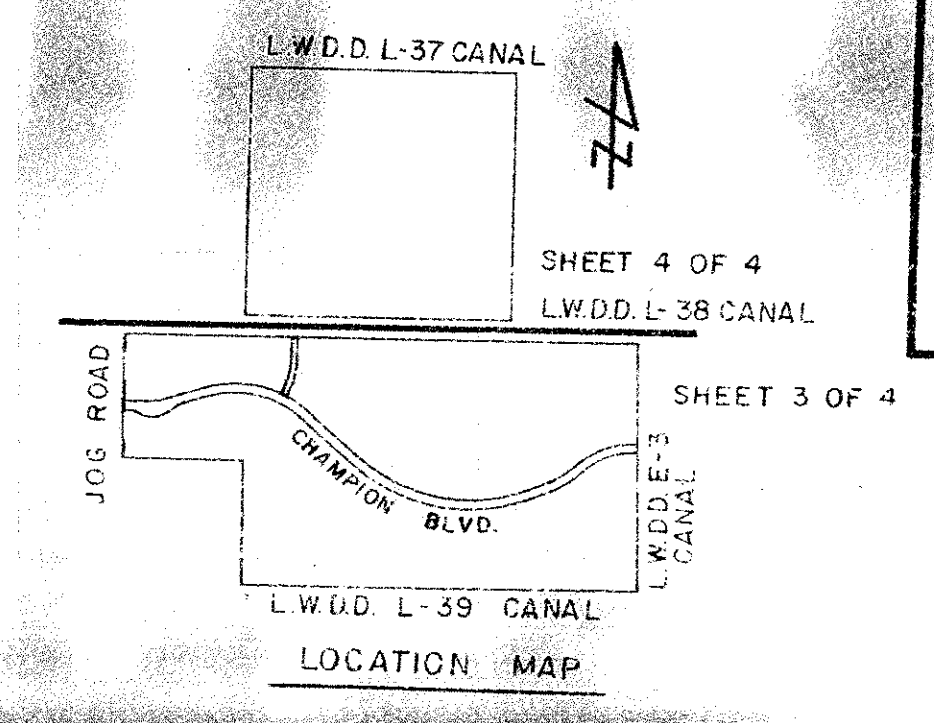
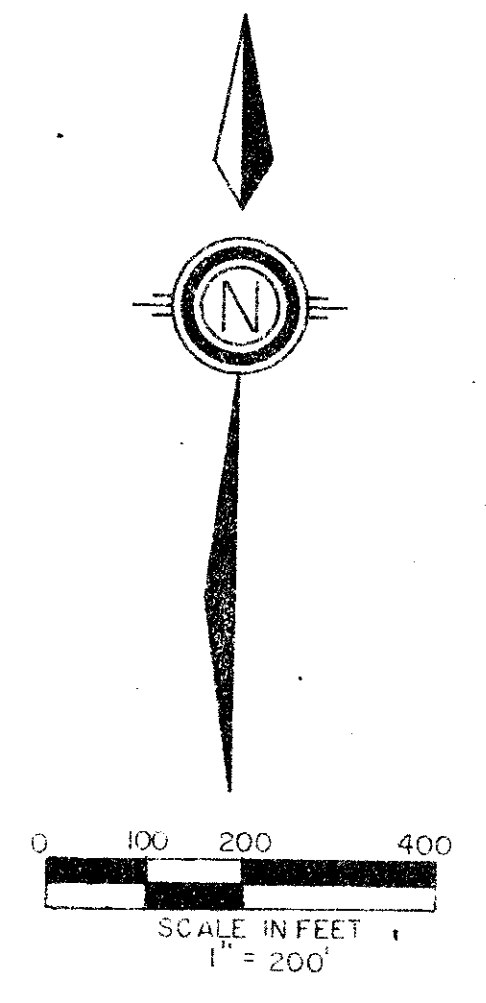
THE POLO CLUB PLAT II

PART OF THE POLO CLUB P.U.D.
SITUATE IN SECTIONS 26, 27, 34 AND 35, TOWNSHIP 46 SOUTH, RANGE 42 EAST
PALM BEACH COUNTY, FLORIDA
1987

SHEET 4 OF 4

49

STATE OF FLORIDA
COUNTY OF PALM BEACH
THIS PLAT WAS FILED FOR
RECORD _____ DAY OF _____
AD. 1986 AND DULY RECORDED
IN PLAT BOOK _____ ON PAGES
_____ AND _____
BY: JOHN B. DUNKLE, CLERK
D.C.



BOCA DELRAY PARCEL 15
PB 51 PGS 138-139

POC PARCEL ONE & PARCEL TWO
NW COR. OF THE NE 1/4
SEC. 34-46-42

POB PARCEL TWO

MATCH LINE SEE SHEET 3 OF 4

MATCH LINE SEE SHEET 3 OF 4

0436-022

57/49

Meridian
Surveying and Mapping Inc.
2000 LOMBARD STREET
WEST PALM BEACH, FL

DRAWN: MHC DATE: OCT. 1986
CHECKED: MAM SCALE: 1" = 200'
DRAWING NO.: 86-P2-074

THE POLO CLUB PLAT II
PART OF
THE POLO CLUB P.U.D.